



Cyber Quarter
tenant
information



The new Cyber Quarter –
Midlands Centre for Cyber
Security provides a single
hub for the cyber security
needs of small or large
businesses.



The centre, backed by the expert academic team of the Wolverhampton Cyber Research Institute, is here to protect the devices your business uses and the services you access.



Based at Skylon Park, Hereford's Enterprise Zone, the centre is a hub to enhance and consolidate national and international security. It is a key player in the Cyber Valley, which is home to 15% of the UK's top 600 cyber companies and spans across Worcestershire, Herefordshire, and Gloucestershire.

The Centre provides the following services:

- **Cyber security research, development and consultancy**

The centre carries out research and development projects, funded by private organisations or through government/UK Research and Innovation funding. Its consultancy and auditing service covers risk assessment; ISO auditing; GDPR compliance; incidence response; and evaluating/developing disaster recovery and business continuity plans.

- **Cyber security testing and certifications**

The centre's state-of-the-art cyber security testing facility can be used for any type of product with a view to achieve industry-level certification. Some examples include automated vulnerability scanning; mobile application testing; algorithm testing; and wireless testing.

- **Cyber security incubator and accelerator**

Along with providing tenant space for around 16 cyber SMEs, a detailed incubation programme attracts and supports the best innovators to the centre, bringing together established cyber businesses, SMEs/start-ups, and academia along with investors to help accelerate innovation and venture creation.

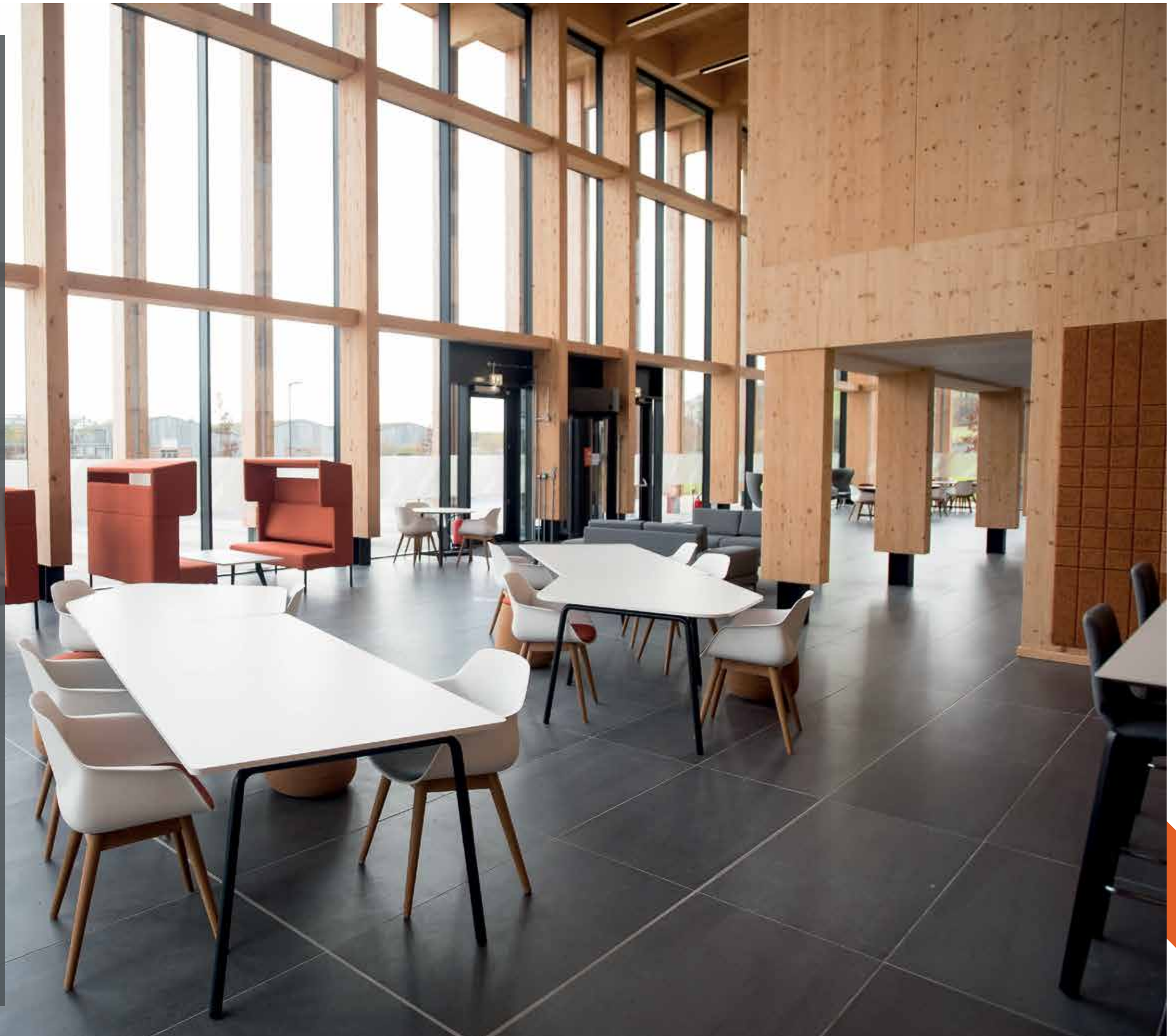
- **Cyber security CPD training and short courses**

As part of a Continuing Professional Development (CPD) programme, short training courses are available and revolve around four thematic areas:

- Information Security Awareness: targeted towards general public and SMEs
- Cyber Security Fundamentals: basic/beginner level training for people from an IT background wanting to upskill or reskill into cyber security
- Technical Training: advanced training for existing cyber-aware practitioners
- Cyber Security Leadership and Management: includes IT risk and resilience, guidance for the board and leadership essentials.

- **Cyber security events**

A range of workshops, conferences, and events where industry and academia join together to share best practice and cutting-edge research outputs.



**Midlands Centre
for Cyber Security**
Hursey Road
Rotherwas
Hereford
HR2 6FP

As this is a new building the postcode may not register on all SatNav systems. You can use the postcode: HR2 6NT and continue to the end of Haugh Road, turning left onto Hursey Road for the Centre.



The location

Hereford is the county town of Herefordshire and lies on the A49 with excellent connections to Birmingham, Bristol and Cardiff. Cyber Quarter sites on the Skylon Park Enterprise Zone.

By Car

Cyber Quarter is just a 10 minute drive from the city centre, 3 minutes from the A49 and trunk road network, 20 minutes from Junction 7 of the M50.

By Plane

Cyber Quarter is within an hour and a half's drive from three international airports (Bristol, Cardiff and Birmingham).

By Train

Cyber Quarter is a 10 minute taxi journey from Hereford Railway Station. Hereford station is mainly served by GWR, West Midlands Railway and Transport for Wales trains. GWR trains connect London Paddington to Hereford in 3h 17m, while Transport for Wales services cover the routes from Manchester to Hereford in 2h 25m and from Milford Haven to Hereford in 4h. Finally, West Midlands Railway connect Birmingham New Street to Hereford in 1h 29m.

See train timetables and buy tickets at [thetrainline](https://www.thetrainline.com)

By Bus

From Hereford city centre walk to Broad street Bus station and catch the 454 bus to Fownhope, Exiting at Vincent Carey Road.

Drive times from other major cities

London - 172 miles/276Km

Birmingham - 79 miles/127 Km

Manchester - 149 miles/239Km

Bristol - 65 miles/104Km

Cardiff - 57 miles/91Km



SPACE

- A variety of office spaces are available, suitable for two, four, six or eight desk occupancy
- Multiple office spaces can be negotiated in order to accommodate larger requirements

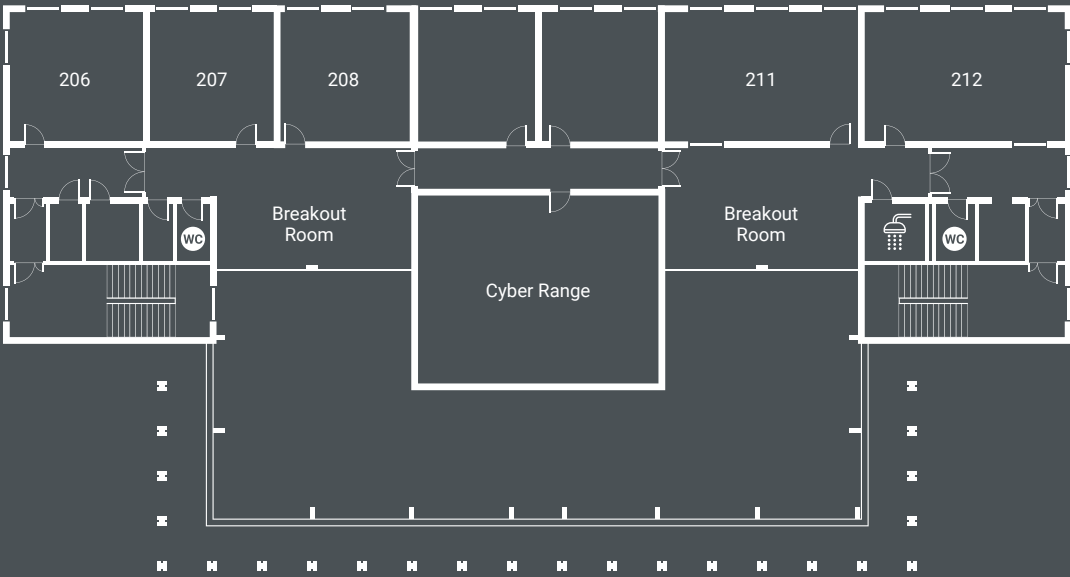
BENEFITS

- Flexible license agreements – Easy In / Easy Out terms
- High quality specification rooms and facilities
- Low energy and running costs
- High-speed broadband and room dedicated Wi-Fi available
- Heating/cooling systems in each room offering tenants individual control.
- Security, CCTV and secure access contact system
- Onsite support team
- Flexible office access times
- Serviced Reception and Business Support
- Ample car parking onsite
- Bicycle parking facilities
- Accessible shower facilities
- Bookable EV charging points

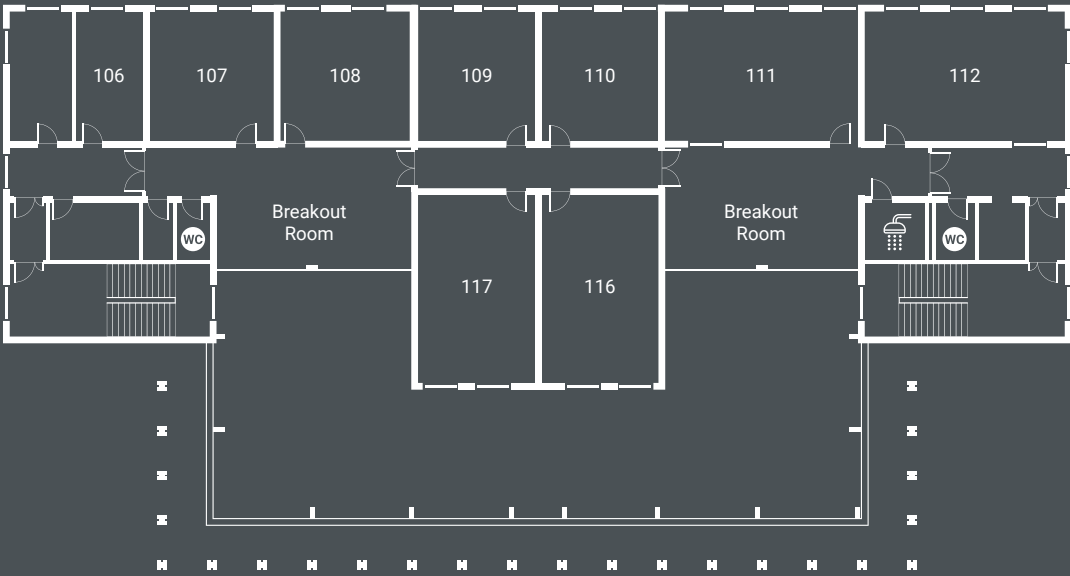
WIDER FACILITIES

- Bookable meeting rooms
- Breakout areas
- Bookable Conference and event spaces
- Bookable Specialist tech facilities including Cyber Range, Forensic Laboratory and Innovation Sandpit

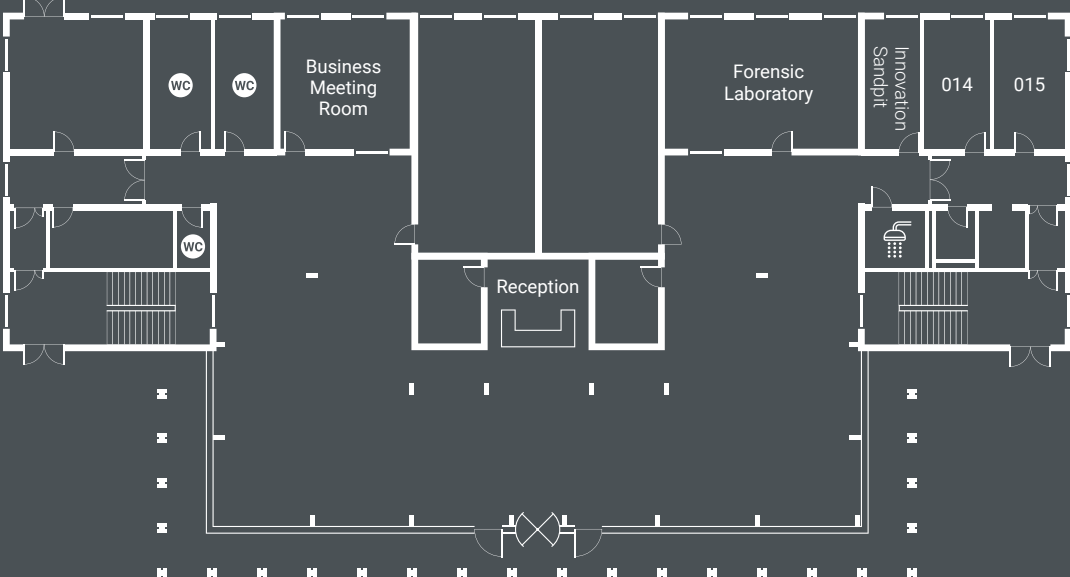
Second Floor



First Floor



Ground Floor



Make Cyber
Quarter your home

The Cyber Quarter will provide a home for up to 16 tenant companies within the cyber sector. Offices and working spaces can be configured to meet your business's specific requirements, and tenants will benefit from on-site technical and business support.

Contact us:

01432 344 424

cyberquarter.co.uk

 @cyber_quarter
 linkedin.com/company/cyber-quarter
 cyberqtr@wlv.ac.uk

The trail-blazing Cyber Quarter – Midlands Centre for Cyber Security project is a joint venture between the University of Wolverhampton and Herefordshire Council, part-funded by the Marches Local Enterprise Partnership (LEP) and the European Regional Development Fund (ERDF).

Supported by



European Union
European Regional
Development Fund

