



The AgriFood Training Partnership

Marty Spittle

IBERS Distance Learning

**AGRIFOOD
TRAINING
PARTNERSHIP**

aftp.co.uk |  [@agrifoodtp](https://twitter.com/agrifoodtp)

Providing specialist training across the entire agrifood supply chain

Flexible learning to fit around your work and aspirations



Advanced Training Partnerships (ATP) Merge to become AgriFood Training Partnership (AFTP)



Collective Achievements of the ATPs 2012-2016



£2.2M  Total Value of Business Delivered

700+



Companies We've Trained

150+



Postgraduate Award Students

25000+



Participants Hours of Training

1500+



Participants on Courses

80+



Portfolio of Training Courses

www.agrifoodatp.ac.uk

www.foodatp.ac.uk

www.atp-pasture.org.uk

The AgriFood Training Partnership consortium

The Core Partners: 6 UK Universities who are leading specialists in delivering food, agriculture and environmental programmes



Associate Partners: 4 Professional Training/Research Organisations



Affiliate Partner:



UNIVERSITY OF
BIRMINGHAM



If you are interested in working with us please get in touch with
c.wagstaff@reading.ac.uk or b.p.mason@reading.ac.uk

Strategic aims of AFTP

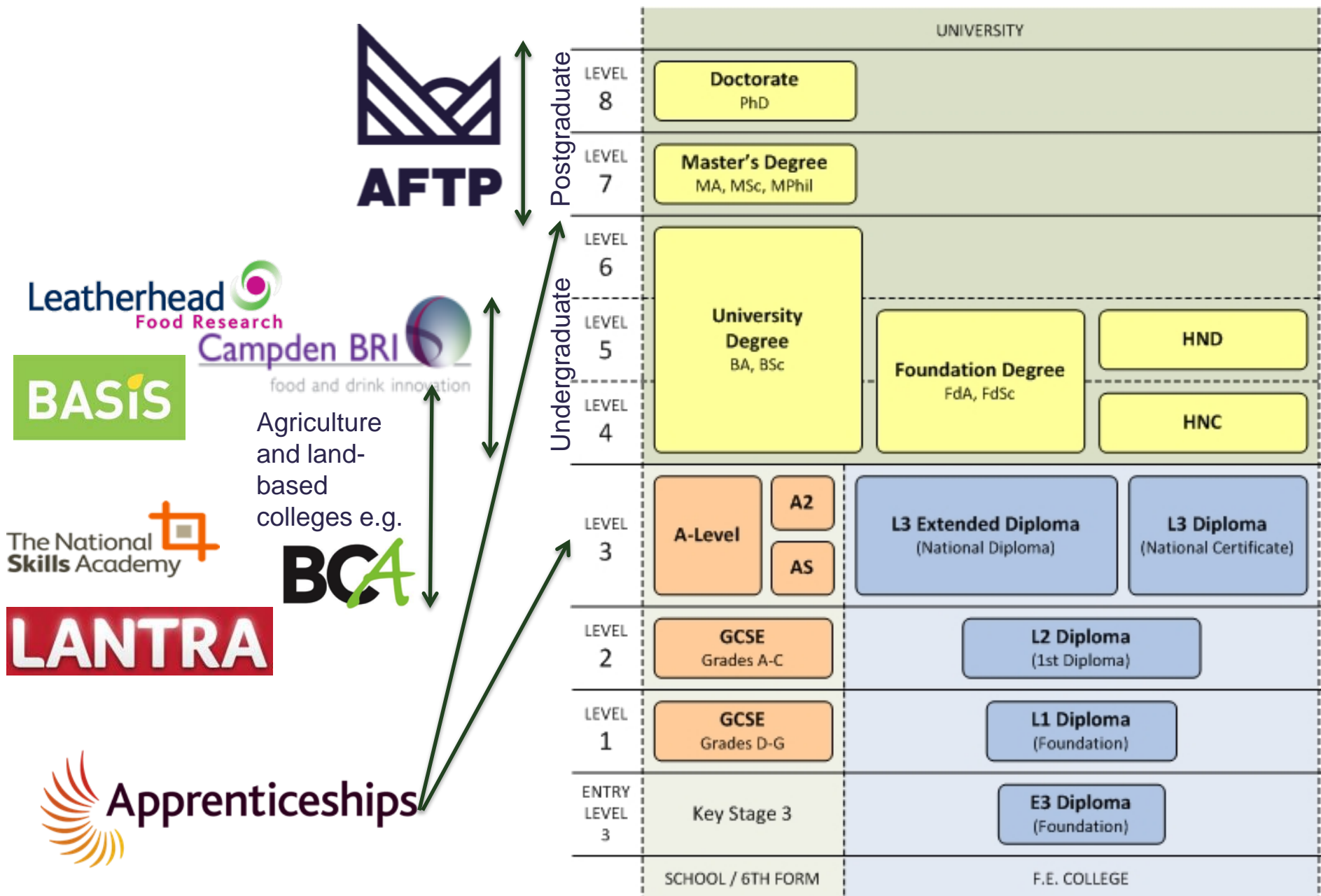
1. To present a single clear voice that can represent the agrifood sector to policy makers and professional bodies.
2. To be the training provider of choice for agrifood industries
3. To bridge the gap between industry and academia
4. To provide a high-level progression route for the agrifood sector –
empowering individuals

fostering innovation

increasing productivity and sustainability.



The AFTP uniquely fits within the UK training matrix



Themes of AFTP

- Livestock and Forages (34)
- Food and Nutrition (32)
- Environment (30)
- Crops and Fresh Produce (16)
- Business and Transferable Skills (14)

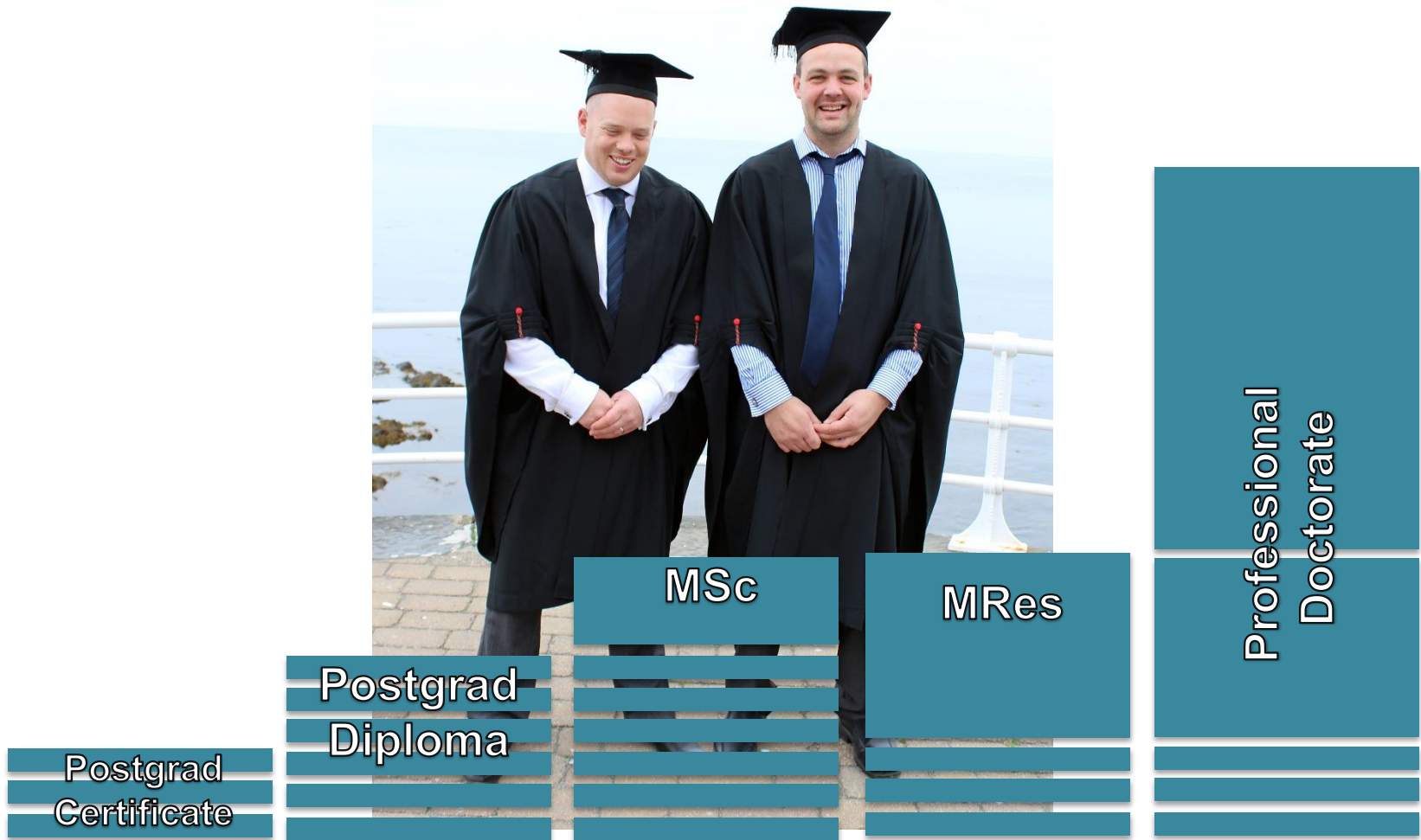
www.aftp.co.uk

Portfolio offered by AFTP

High-level | Part-time | Work-based | Flexible

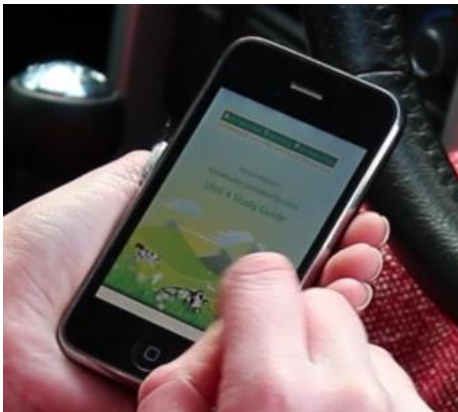
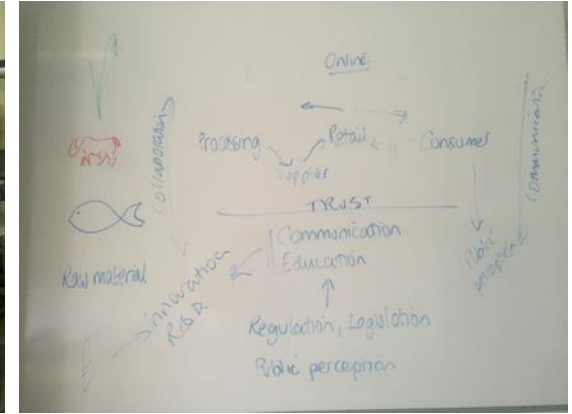
- Short courses to enable an employee to rapidly accumulate focused, specialist knowledge of a sector = accredited CPD
- Supported by experienced tutors who can guide course choice and programme building
- Postgraduate qualifications
- Work-based research

Flexible Routes to Build Qualifications



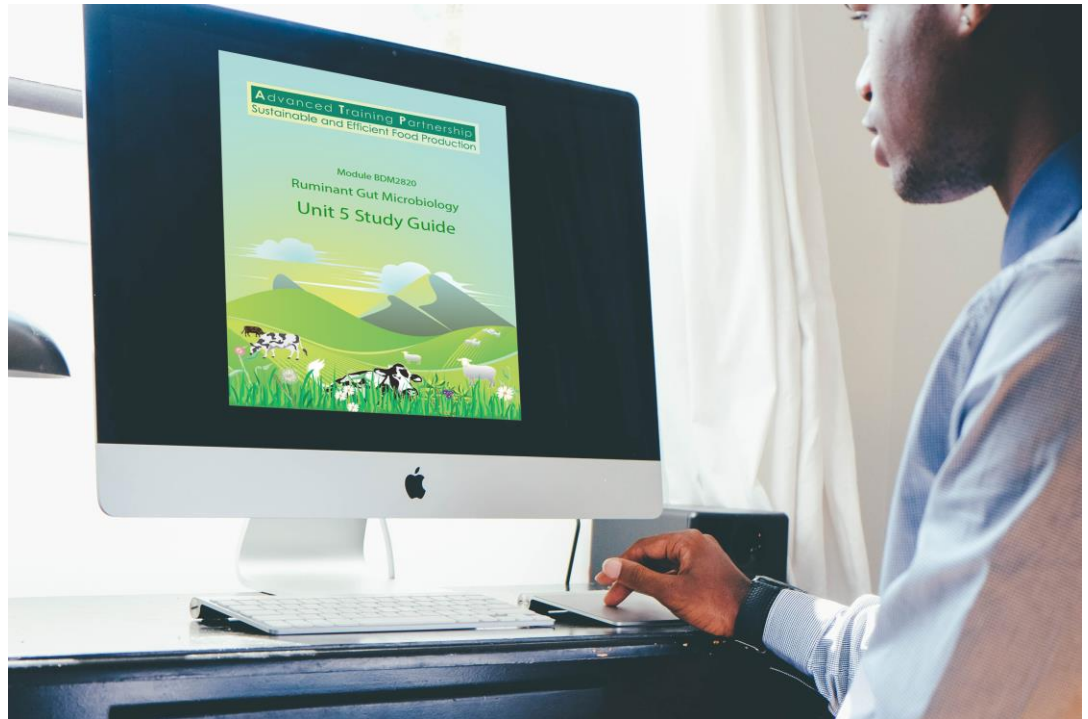
Delivery of training

Flexible options including online, laboratory, field, classroom and blended learning modes of teaching

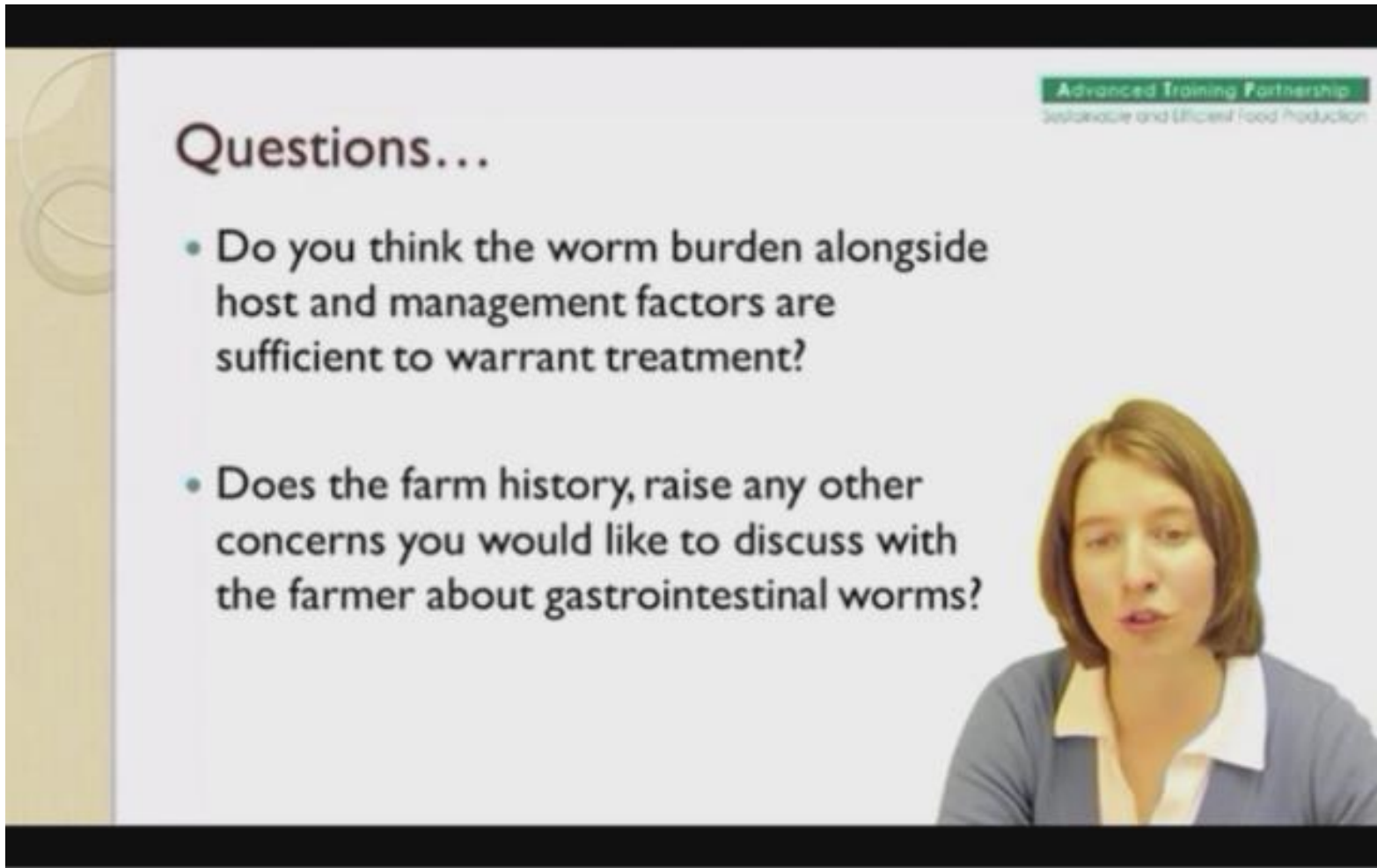


Online Courses

- **Latest research case studies**
- **Guided and supported learning**
- **Reading, videos, podcasts, mobile devices, forums, group and individual assignments.**
- **Interaction with other students**
- **12-14 weeks**
- **10-15 hrs per week work**



Expertise from Industry and Academia



Advanced Training Partnership
Sustainable and Efficient Food Production

Questions...

- Do you think the worm burden alongside host and management factors are sufficient to warrant treatment?
- Does the farm history, raise any other concerns you would like to discuss with the farmer about gastrointestinal worms?

Contact Us

www.aftp.co.uk

0118 378 7746

info@aftp.co.uk

